

RESCUE OUR REGIONAL PARKS & OPEN SPACE

**TAKE CARE OF WHAT WE HAVE -- PREPARE FOR THE FUTURE
PROTECT THE AMERICAN RIVER PARKWAY**



Grassroots Working Group Status
SARA Annual Meeting
December 3, 2011

THE TIME LINE

May 12, 2010	Board of Supervisors (BOS) Workshop
June 2010	Grassroots Working Group Formed
September 2010	Report to BOS – Progress Report #1
December 2010	Sac Metro Chamber Board of Directors
January 2011	Meetings with Individual Supervisors
February 2011	Progress Report No. 2 Published
April 2011	Meeting with Szalay/Leonard/Baker/Gill
May 2011	Recommendations to BOS
August 2011	BOS Authorizes Sales Tax Legislation County Exec Advisory Committee Announced
October 2011	Sac Metro Chamber Civic Amenities Committee
November 2011	First Meeting of County Exec Advisory Committee

RECOMMENDATIONS

1. **Submit the following to Sacramento County voters in November 2012 to determine the future of our Regional Parks & Open Space**
 - a) Creation of Independent Regional District
 - b) Sales Tax of 0.1% (i.e. a penny per \$10)
 - c) A guarantee that existing tax revenues allocated to Regional Parks will not be replaced with new tax revenues

Deleted from Recommendations July 15, 2011

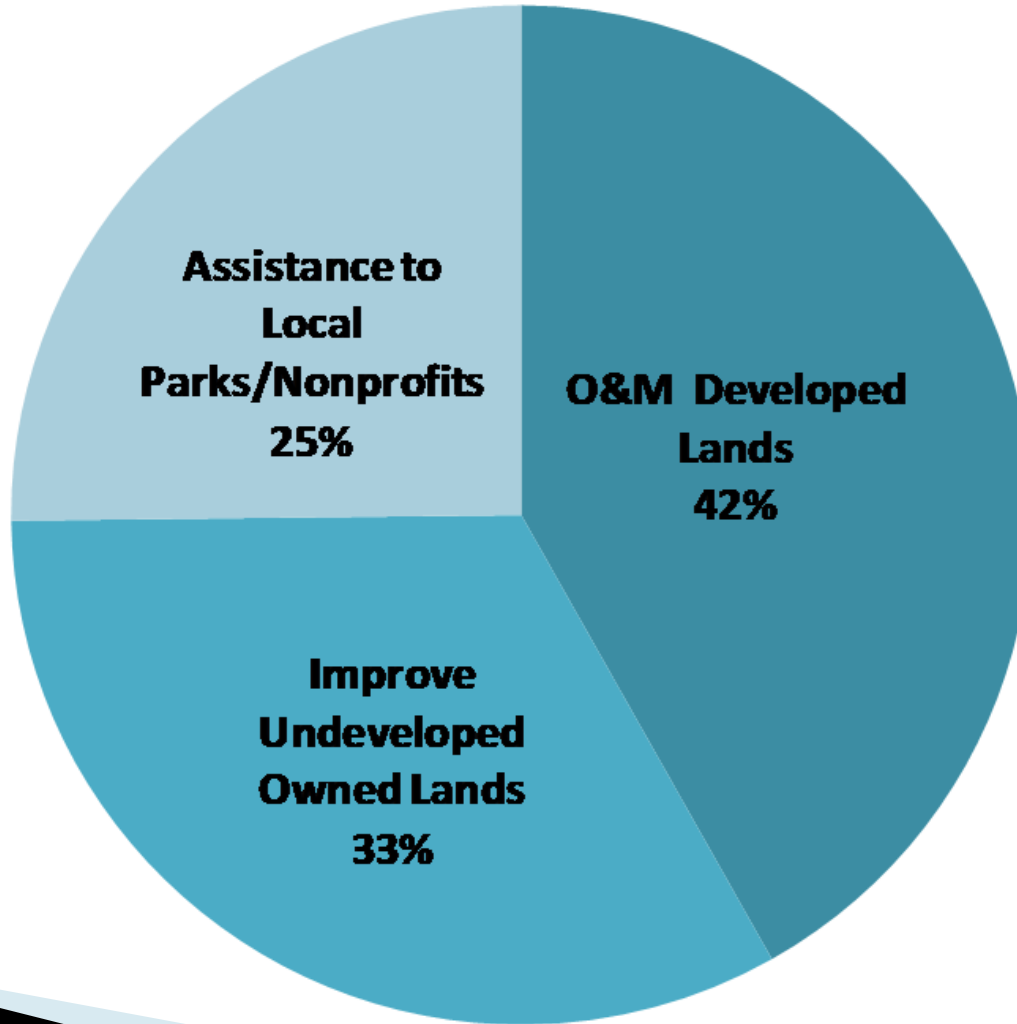
2. **Support state legislation needed to enable a vote in November 2012 & to continue consideration of Grassroots Working Group Recommendations**

WHY AN INDEPENDENT DISTRICT

- ▶ **Best chance at ballot box w/ new special tax**
 - Public Opinion Survey
- ▶ **Strict Focus on Park Management**
 - Supervisors sit on 25+ Boards/Commissions
- ▶ **Proven model as regional economic engine**
 - East Bay Regional Park District

USE OF ESTIMATED SALES TAX

ESTIMATED \$17 MILLION PER YEAR



LEGISLATIVE PROPOSAL

- Enacted in 2011 for a November 2012 ballot measure
- Enabling only
 - ❑ Did not mandate action re: governance or funding
 - ❑ Required to continue consideration of Grassroots Working Group Recommendations until July 2012
- BOS may initiate formation of independent district and have sole responsibility for oversight of formation process
- Allows financial assistance to local parks and nonprofits
- Enables County to propose levying a smaller sales tax increase than allowed under current law
- Single ballot measure to both form and fund district

CURRENT STATUS

- **County Executive Advisory Committee**

6 meetings ending on January 9, 2012

www.ceo.saccounty.net/SAC_CEO_DF_CEO_PARKS

- **Sac Metro Chamber Civic Amenities Committee**

- **Grassroots Working Group**

Recommendations are Best Chance to Rescue Regional Parks

Can support any alternative that accomplishes same results with as good a chance of success

Continued Public Education Opportunities

Participating in Advisory & Civic Amenities Committees

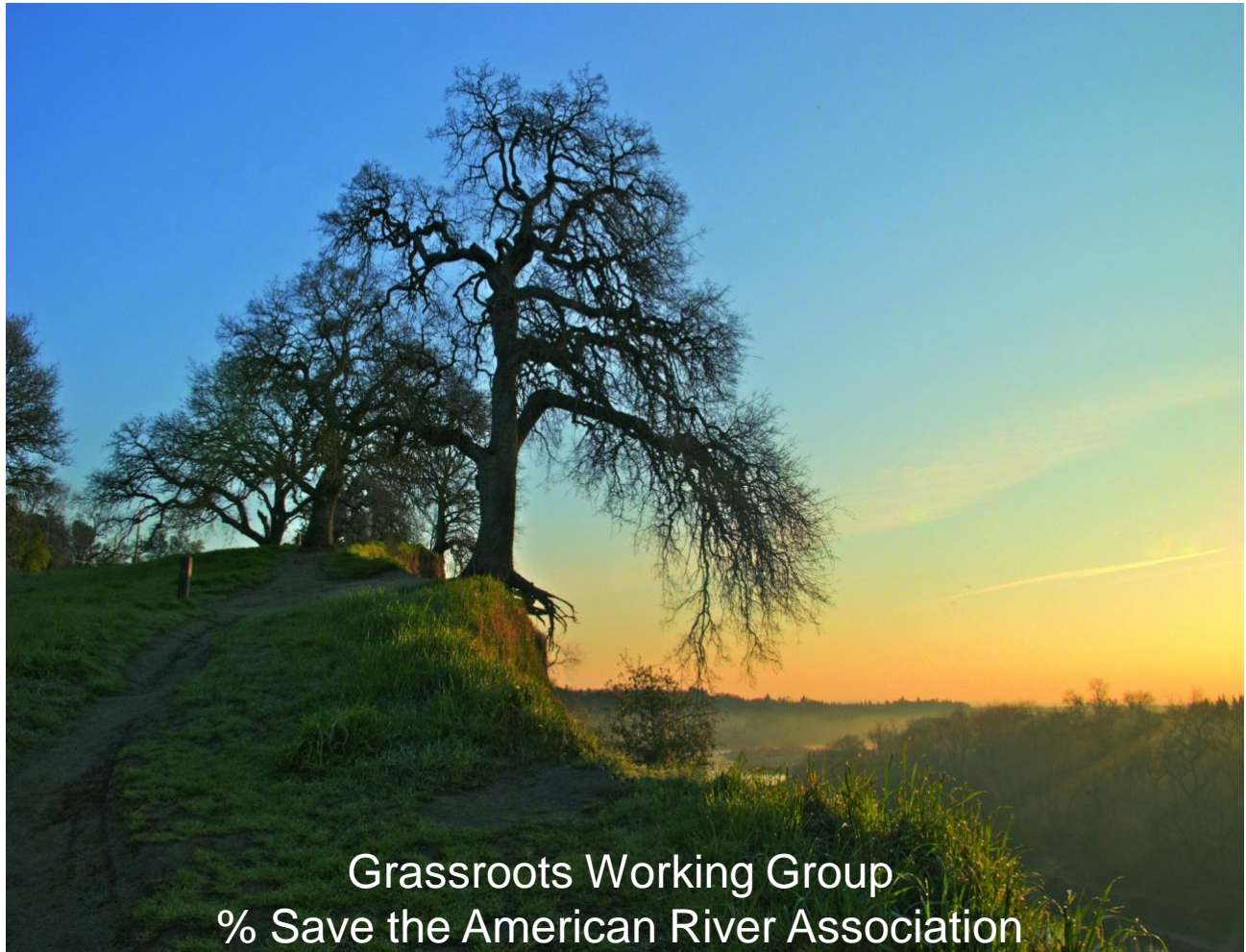
THE BOTTOM LINE

“It is our task in our time and in our generation to hand down undiminished to those who come after us, as was handed down to us by those who went before, the natural wealth and beauty which is ours.”

President John F. Kennedy
March 3, 1961

CLOSING

- Grassroots has caused our Regional Parks & Open Space System and all parks to be on the agenda of decision makers.
- County Board of Supervisors and County Executive have an opportunity to:
 - ▶ Establish and fund a regional parks system to serve as a foundation for a better quality of life for all of us,
 - ▶ Foster regional cooperation among the County, cities, and special districts,
 - ▶ Provide safe and well maintained regional parks,
 - ▶ Provide green infrastructure recognized as necessary to attract economic activity,
 - ▶ Preserve the American River Parkway and all other regional parks.
- Must wait for the results from the County Executive's Advisory Committee & Chamber Civic Amenities Committee
- Monitor County Executive's Budget Proposal to see that sufficient resources are available to provide safe and well maintained parks.



Grassroots Working Group
% Save the American River Association

4441 Auburn Boulevard, Suite H
Sacramento, CA 95841

Tel: (916) 482-2551

www.sarariverwatch.org/grassroots.php